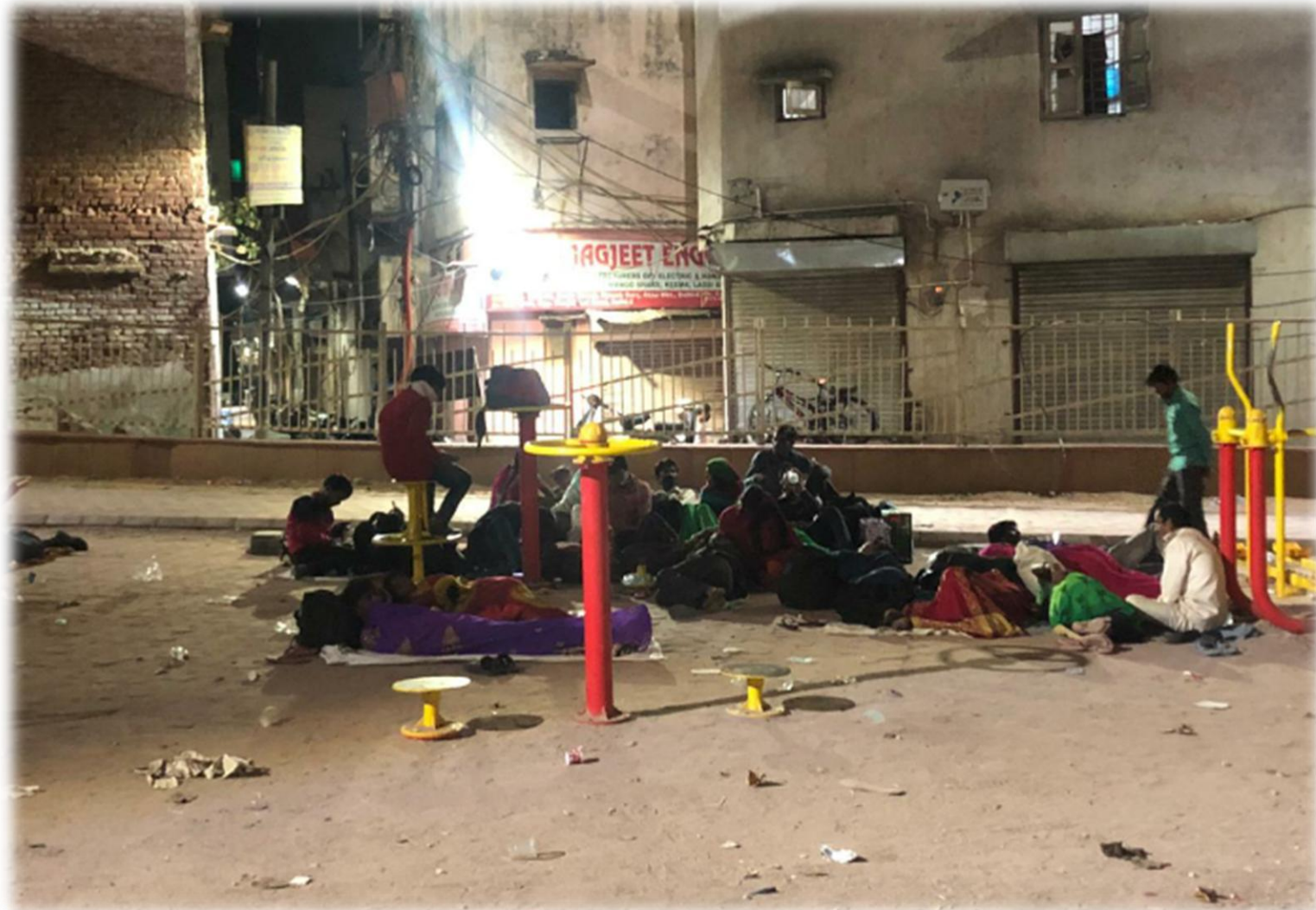


PARADISE WELFARE SOCIETY

OFF.ADD-10051,MAIN BAZAAR,NWB GANJ,AZAD MKT.DELHI-6

-PROVIDED SHELTER AND FOOD TO THE NEEDY PEOPLE-



**PARADISE WELFARE SOCIETY DISTRIBUTED FOOD KITS TO THE NEEDY PEOPLE
AFFECTED DUE TO THE COVID-19 LOCKDOWN**

AT-SARAI KALE KHAN-II, YAMUNA VIHAR, DELHI



**PARADISE WELFARE SOCIETY DISTRIBUTED FOOD TO THE NEEDY PEOPLE IN
DIFFICULT TIMES OF COVID-19
AT- KATPUTLI COLONY,ANAND PARBAT,DELHI**



**PARADISE WELFARE SOCIETY DISTRIBUTED MASKS TO EVERYONE
IN DIFFICULT TIMES OF COVID-19**

AT- WARD NO.83,MAJNU KA TILA,ISBT,DELHI





PARADISE WELFARE SOCIETY/NGO

UNDER ACT 1860,NCT OF DELHI GOVT.

OFF.ADD.-10051,MAIN BAZAAR,NWB GANJ,AZAD MKT,DELHI-6

**PARADISE WELFARE SOCIETY HUMBLY REQUESTS
THE CITIZENS OF THE NATION TO STAND AS ONE
UNIT AND SUPPORT THE INITIATIVES MADE BY THE
GOVERNMENT AND OUR HONOR'BLE PRIME
MINISTER AND CHIEF MINISTER(DELHI).**

KINDLY DO NOT CREATE PANIC.

**WE THE CITIZENS OF INDIA WILL FIGHT AND WIN
AGAINST THE COVID-19 OUTBREAK.**

**STAY SAFE,STAY HOME AND MAINTAIN SOCIAL-
DISTANCING.**

JAI HIND!

WEB: WWW.PARADISEWELFARESOCIETY.COM

EMAIL: info@paradisewelfaresociety.org

GEN.SECT-MR.NASIR AHMED
(9899307131)